

PRINCE OF PEACE LUTHERAN CHURCH

2561 Victoria Street North , Roseville, MN 55113-3410

651-484-4144 • office@poproseville.org



SPECS AND FEES

Prince of Peace Columbarium is installed flush to the wall under the sanctuary windows on the east side of the building:

- ◆ 2 - 24 niche single sided, standard depth columbarium niche units (1-2 urns)
- ◆ 1 - 12 niche single sided, double depth columbarium niche units (1-4 urns)
- ◆ All granite construction - winter birch granite
- ◆ Black granite niche cover

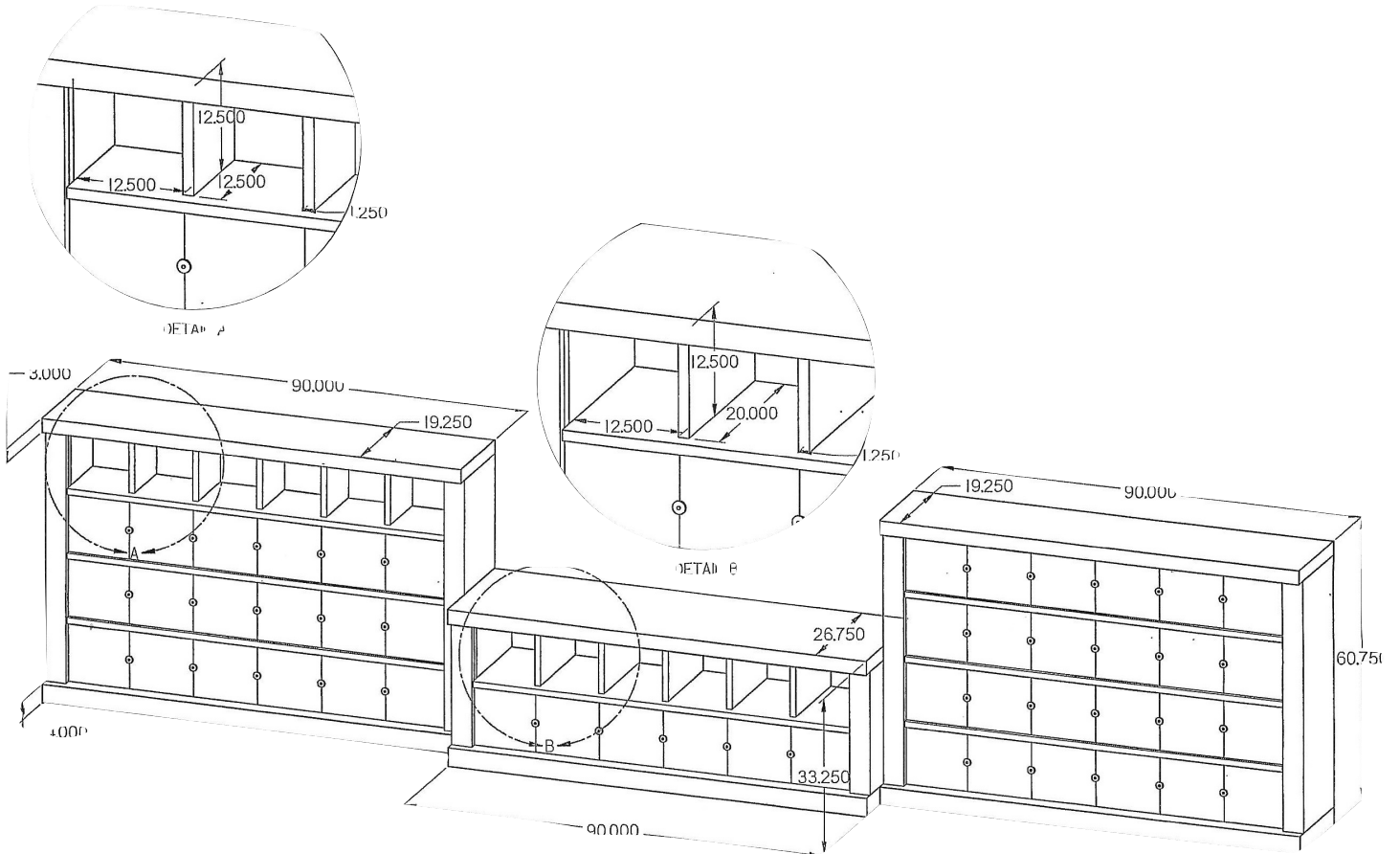
	Niche size	Cost
Members*	STANDARD (1-2 urns)	\$1,650
Members	DOUBLE(1-4 urns)	\$2,150
Non-members	STANDARD (1-2 urns)	\$1,850
Non-members	DOUBLE (1-4 urns)	\$2,350
	Inurnment fee *	Cost
Members	Inurnment arrangements must be completed <u>5</u> days prior to inurnment. Family (or a pre-designated person) of deceased is responsible for the delivery of cremated on the day of inurnment.	\$25
Non-members		\$150
Lettering add font	Individual contract with Anderson Memorial	market value
Urn identification Plate	Family choice and responsibility.	

- * Church membership is extend to current and past members as well as their families.
- * Inurnment fee is separate from other fees common with funeral cost.
- * Shareholders are exempt from Inurnment fees

ANDERSON MEMORIALS, INC
106 4th Street, SW
Austin MN 55912
507-437-3636 Toll Free 1-800-658-2560



	NAME	DATE			
DRAWN	Scott Finkelman	June 29, 2014			
CHECKED					
ENG APPR					
MGR APPR					
UNLESS OTHERWISE SPECIFIED DIMENSIONS ARE IN INCHES ANGLES *XX*			FILE NAME: Anderson.rvt		
2 PL *XXX 3 PL *XXXX			SCALE:	WEIGHT:	SHEET 1 OF 1
			TITLE 3 Columbariums		
			SIDE DWG NO D	Anderson	REV



November 21, 2014

Revised 9/2017